

Storage Tanks

- Can be used as pump tanks, storage tanks, contact tanks, mixing tanks, any water storage application
 - **Custom Storage Tanks**
 - Sizes from 80 to 12,500 Gallons
 - ASME Code steel tanks are constructed of Code material
 - ASME Code Construction
 - All tanks are constructed to the requirements of the ASME Code. These ASME code tanks are available at 125, 150 & 160 PSI working pressure. Consult factory for ASME code tanks are with greater or lesser working pressures with special configurations, materials and pressures.
 - Linings and Coatings
 - Each lining and coating has particular capabilities and limitations. Please consult the factory or your local Water Systems representative for recommendations on the uses of linings for specific applications. Lined tanks receive one prime coat of paint on external surface. Thorough investigation on the service life of steel tanks with protective coatings or linings has led to the recommendation of the following linings:
 - **Glass Lined** – All internal surfaces exposed to water are glass lined per ASME HLW code procedures.
 - **Cement Lined** – Cement lining consists of a careful hand application of a specially formulated cement over the interior of the vessel. This lining adds a great deal of weight to the tank; however, with proper application very little tank corrosion occurs over a long life.
 - **Epoxy Lined** – The application of specially formulated epoxy makes this lining suitable for cold or hot water storage.
 - Cathodic Protection
 - Glass lined, cement and epoxy tanks are furnished with anodes designed for maximum protection.
 - All tanks will be supplied with the fittings located as indicated on the drawings unless specified otherwise.
 - Inspection Openings
 - 11”x 15” manhole or 4”x 6” handhole are available as options on diameters 36” and below.
 - 2 each 2” ASME inspection openings are standard on tanks 36” diameter and below.
 - 12”x 16” ASME inspection openings are standard on tanks with 42” diameters and above.
 - Optional
 - Military specification tanks
 - Manholes, handholes, additional openings, lifting lugs, angle legs, ring base and saddles are available at extra cost.
- See pages 2 and 3*
- **Galvanized Tanks**
 - Available in vertical models only
 - From 12 to 900 gallons
 - 75 psi
 - 1-Year Warranty

See pages 2 and 3

See page 4



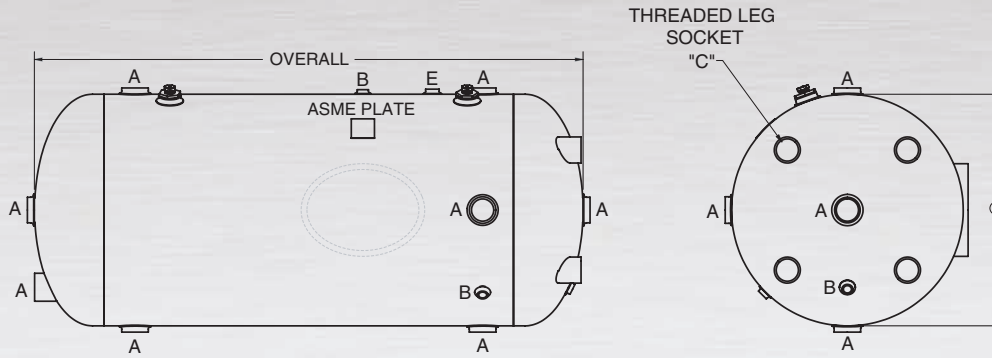
MADE IN THE U.S.A.

Custom Storage Tanks

Selection. Superior Features. Custom Options.

Volume, Dimension and Weight Specifications

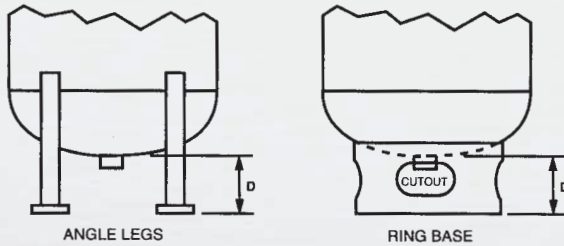
Custom-Line Storage Tanks (20" – 96" Dia. Tanks)



NOTE:

- 1) 54" Diameter and larger tanks must be ordered with angle legs rather than threaded leg sockets for vertical installations.
- 2) Specify for horizontal or vertical installation.
- 3) No leg sockets provided on horizontal tanks.
 2 each 2" ASME inspection openings are standard on tanks 36" diameter and below.
 12"x16" ASME inspection openings are standard on tanks with 42" diameters and above.

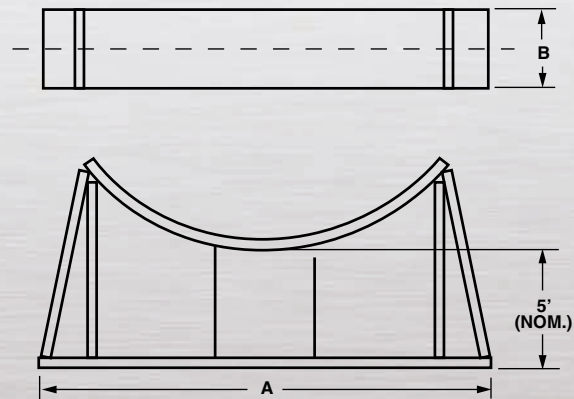
Optional Vessel Support Construction



DIMENSION CHART (INCHES)					
TANK DIAMETER	A	B	C	D	E
20"	2	3/4	1 1/2	6	3/4
24" – 36"	2 1/2	3/4	2 1/2	8	1
42" & 48"	3	3/4	3	10	1
54" – 96"	3	3/4	3	10	1

Tank Saddles

PART NO.	TANK DIAMETER (INCHES)	A	B
P2-2600-20	20	22	6
P2-2600-24	24	26	6
P2-2600-30	30	32	6
P2-2600-36	36	38	6
P2-2600-42	42	44	6
P2-2600-48	48	50	6
P2-2600-54	54	56	8
P2-2600-60	60	62	8
P2-2600-66	66	68	8
P2-2600-72	72	74	10
P2-2600-84	84	86	10
P2-2600-96	96	98	10



For custom specifications or unusually high storage requirements, we offer custom build-to-order factory jacketed and insulated or un-insulated tanks up to 12,500 gallons. Take advantage of custom tanks made for any need by Perma Tank.

Custom Storage Tanks

Large Volume Storage Tank Selection Chart

Custom-Line Storage Tanks (Sizes 80 thru 12,500 Gallons)

MODEL NUMBER	DIAMETER	NOMINAL APPROXIMATE O. A. LENGTH	GALLON CAPACITY	MODEL NUMBER	DIAMETER	NOMINAL APPROXIMATE O. A. LENGTH	GALLON CAPACITY
20-80	20"	60"	80	54-650	54"	71"	650
20-100	20"	72"	100	54-750	54"	81"	750
				54-900	54"	95"	900
24-125	24"	66"	125	54-1,000	54"	105"	1,000
24-140	24"	75"	150	*54-1,250	54"	129"	1,250
*24-175	24"	90"	125"	*54-1,500	54"	153"	1,500
				*54-1,800	54"	181"	1,800
30-175	30"	60"	175				
30-200	30"	71"	200	*60-800	60"	72"	800
30-250	30"	84"	250	*60-1,000	60"	88"	1,000
*30-300	30"	99"	300	*60-1,250	60"	107"	1,250
				*60-1,500	60"	126"	1,500
36-250	36"	60"	250	*60-1,750	60"	146"	1,750
36-300	36"	71"	300	*60-2,000	60"	165"	2,000
36-350	36"	86"	350				
36-400	36"	93"	400	66-1,000	66"	75"	1,000
*36-500	36"	122"	500	*66-1,500	66"	107"	1,500
				*66-2,000	66"	139"	2,000
42-375	42"	67"	375	*66-2,500	66"	171"	2,500
42-450	42"	79"	450				
42-500	42"	88"	500	*72-2,500	72"	147"	2,500
42-600	42"	103"	600	*72-3,000	72"	174"	3,000
42-700	42"	119"	700	*72-3,500	72"	201"	3,500
*42-800	42"	134"	800	*72-4,000	72"	228"	4,500
48-500	48"	73"	500	*84-4,000	84"	173"	4,000
48-600	48"	81"	600	*84-5,000	84"	212"	5,000
48-700	48"	93"	700	*84-6,000	84"	252"	6,000
48-750	48"	105"	750	*84-8,000	84"	330"	8,000
48-900	48"	117"	900				
48-1,000	48"	137"	1,000	*96-7,500	96"	244"	7,500
*48-1,250	48"	159"	1,250	*96-10,000	96"	319"	10,000
*48-1,500	48"	190"	1,500	*96-12,500	96"	395"	12,500

NOTE: Above listed tanks are standard sizes only. Other capacity tanks are available. Custom tanks built to your specifications are also available. Consult factory representative.

* Vertical installation requires addition of angle iron legs or ring base.

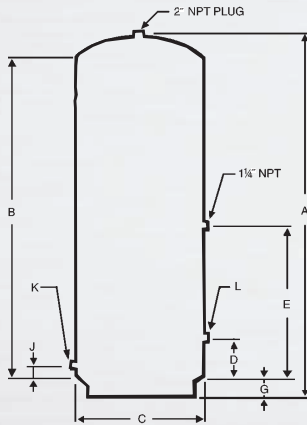
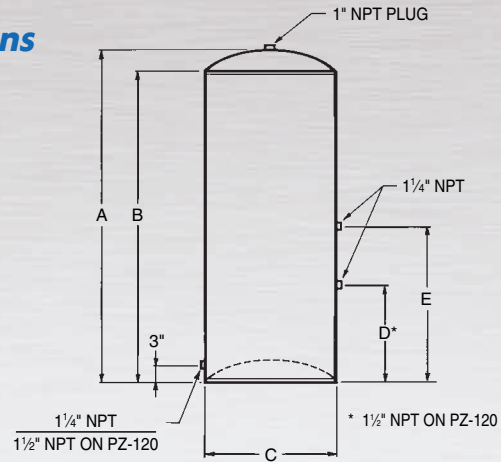
Galvanized Tanks

Sizes from 12 to 900 gallons - 75 psi, non-ASME

Volume, Dimension and Weight Specifications

12 to 120 gallons

MODEL NUMBER	VOLUME (GAL)	DIMENSIONS IN INCHES					SHIPPING WEIGHT (LBS.)
		A	B	C	D	E	
PZ-12	12	26 1/2	24	12	5	13	27
PZ-21	21	26 7/8	24	16	5	13	45
PZ-32	32	38 3/4	36	16	8	17	52
PZ-42-T	42	51	48	16	12	26	71
PZ-42-S	42	33 5/8	30	20	8	17	71
PZ-82	82	63	60	20	12	33	114
PZ-120	120	64 1/2	60	24	12	33	154



220 to 480 Gallons

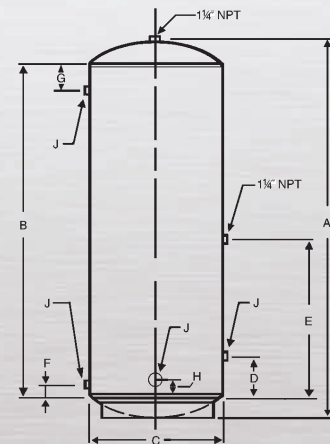
MODEL NUMBER	VOLUME (GAL)	DIMENSIONS IN INCHES								SHIPPING WEIGHT (LBS.)	
		A	B	C	D	E	G	J	K		L
PZ-220	220	78	66	30	6	32	6	2 1/2	2	2	303
PZ-315	315	79 1/2	66	36	6	32	7	2 1/2	2	2	416
PZ-480	480	87	72	42	6	32	7 1/2	2 1/2	2	3	640

WORKING PRESSURE - 75 PSI
1/2" NPT "H" SPUDS NOT ON PZ-220 AND PZ-315.

525 to 900 Gallons

MODEL NUMBER	VOLUME (GAL)	DIMENSIONS IN INCHES								SHIPPING WEIGHT (LBS.)	
		A	B	C	D	E	F	G	H		J
*PZU-525	525	131	114	36	6	56	2 1/2	2 1/2	4	2" NPT	685
*PZU-900	900	161	144	42	14	69	4	4	9	3" NPT	1040

*NOTE: PZU models are universal and can be installed horizontally or vertically.



Certified to NSF/ANSI
61-G and 372

A. O. Smith reserves the right to make product changes or improvements at any time without notice.

For more information on Perma Tank, contact:
Water Systems - An A. O. Smith Company
500 Tennessee Waltz Parkway Ashland City, TN 37015
800-365-4300 www.wstanks.com

WATER SYSTEMS
AN A. O. SMITH COMPANY